

# The using document instructions of Device Manage

## 1. Installation steps:

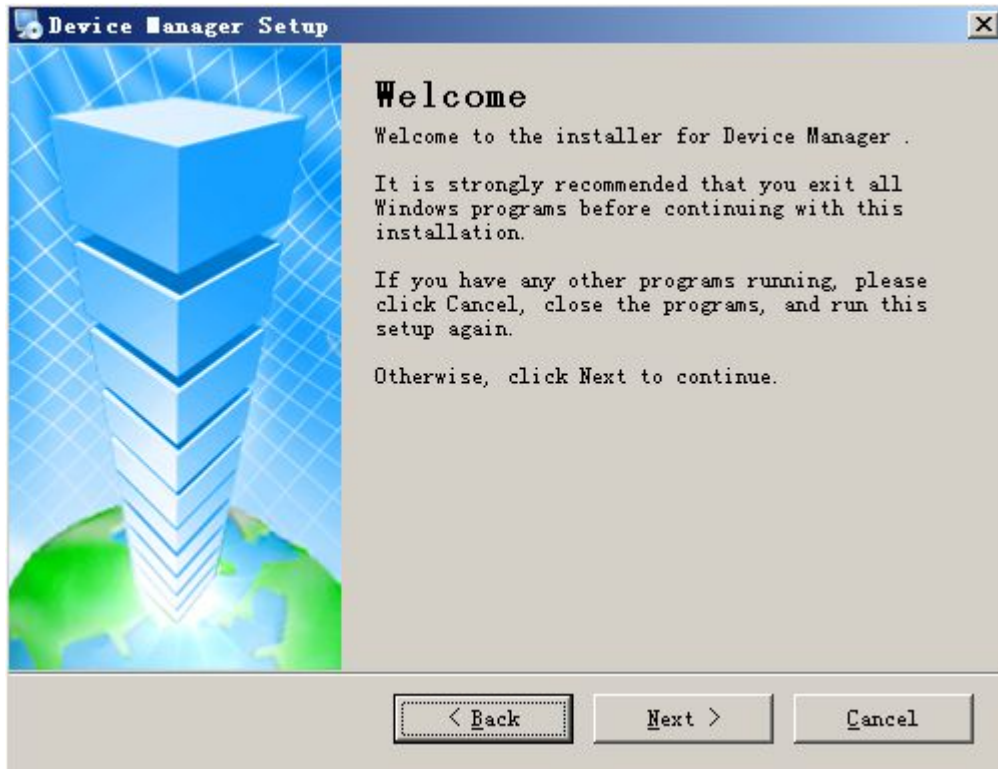


General\_DeviceManage  
\_V2.5.0.6.R.20140305  
.exe

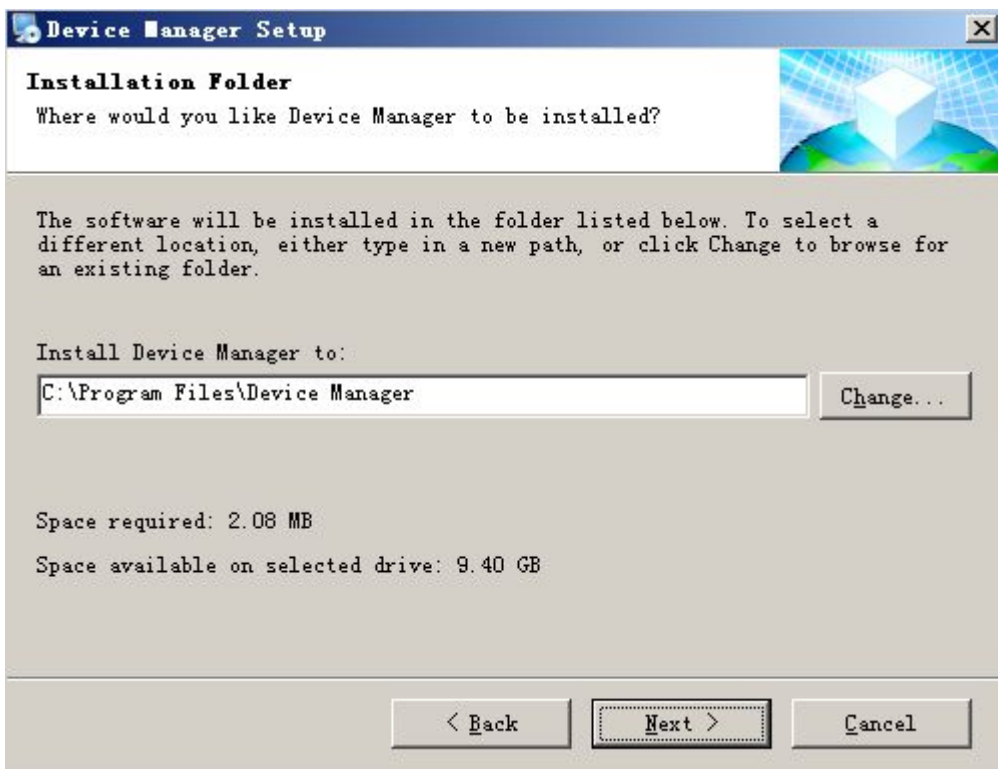
- 1) Find in the disc and double-click `General_DeviceManage_V2.5.0.6.R.20140305.exe` file, pop up the dialog box shown in the diagram below.



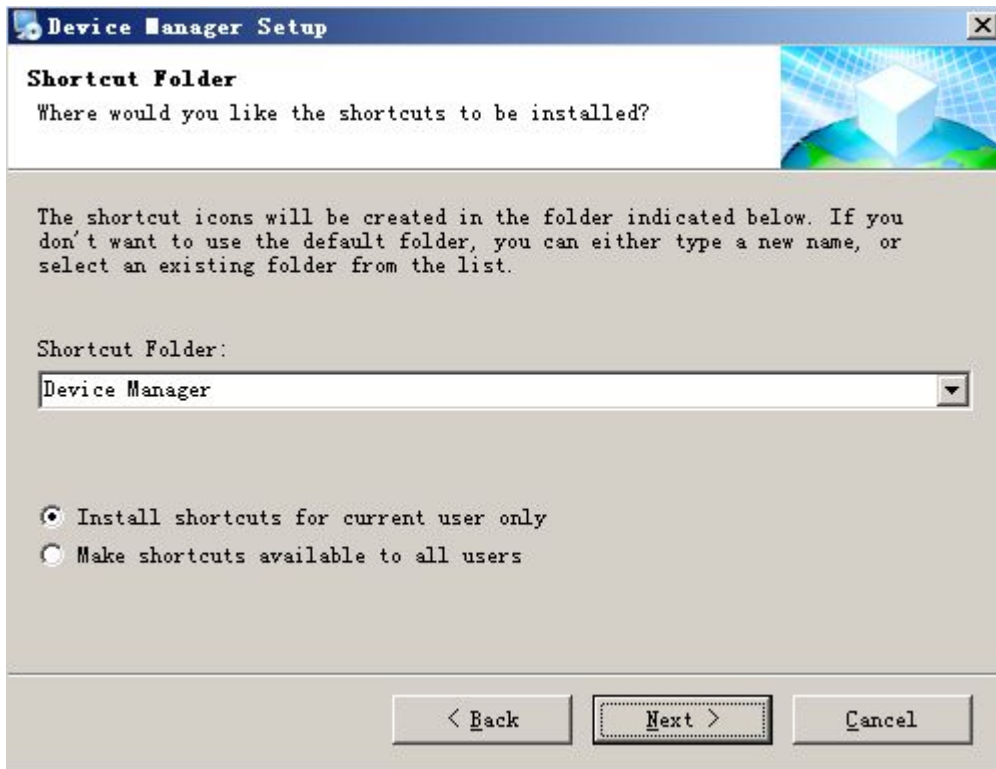
- 2) Click "next", pop up the dialog box shown in the diagram below.



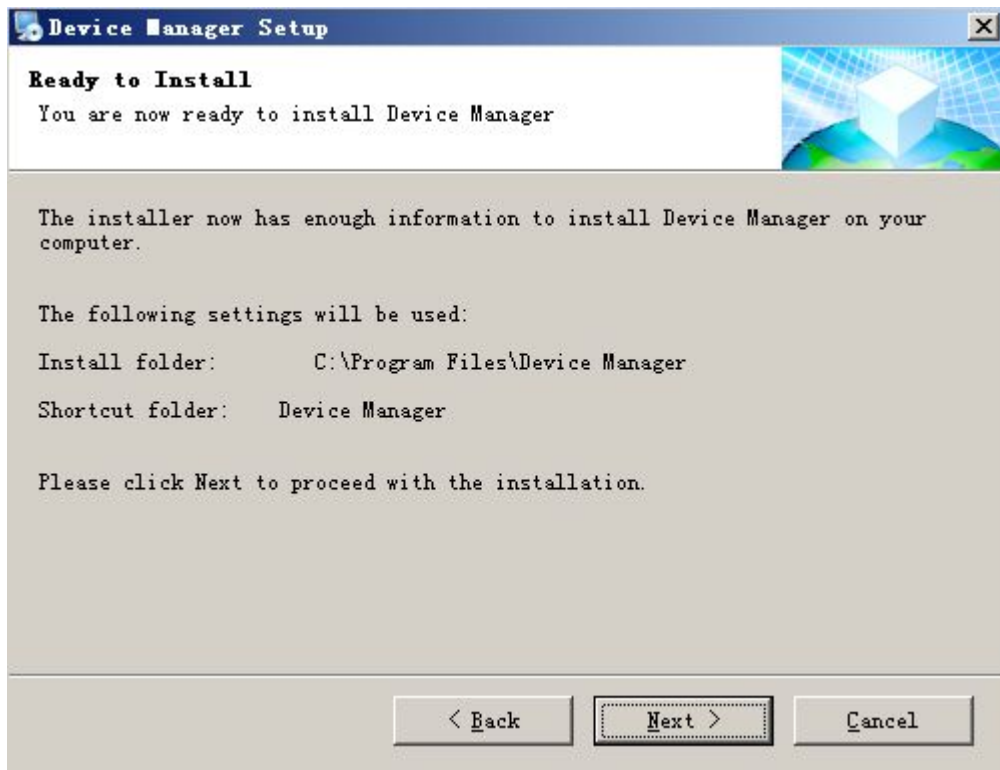
3) Click "next", pop up the dialog box shown in the diagram below.



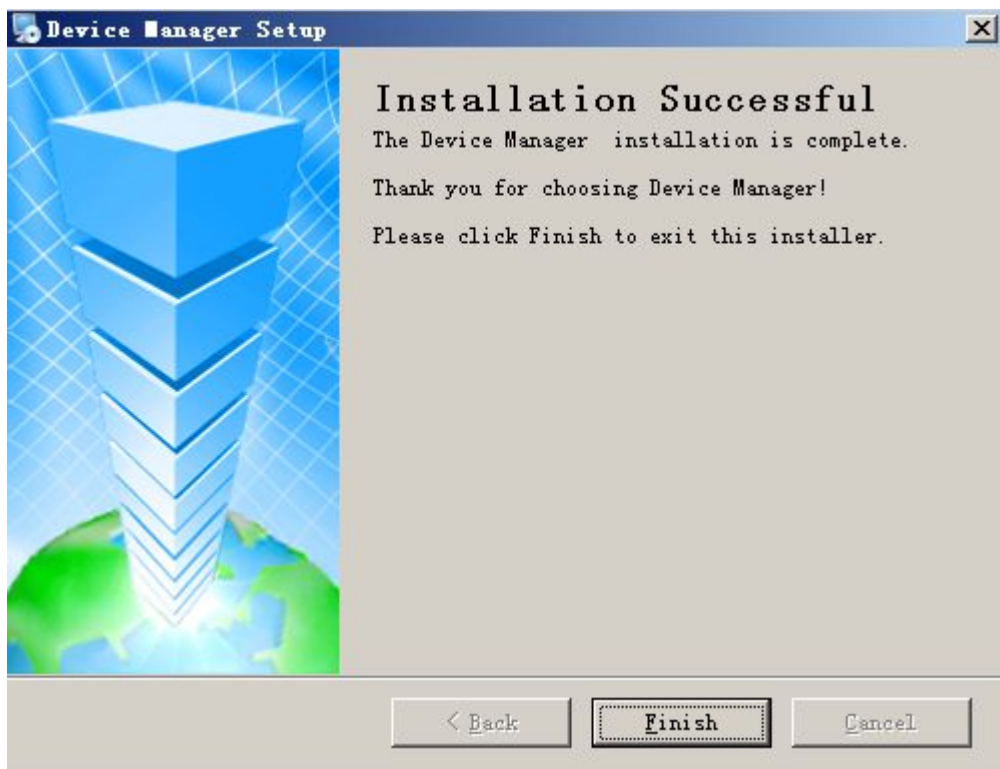
4) Press the "change" button, , select the installation pat, the system default folder is "C:\Program Files\Device Manager", Click "next", pop up the dialog box shown in the diagram below.



- 5) Input the user message, click “next”, start to install Player, pop up the dialog box shown in the diagram below.



- 6) Click “next”, pop up the dialog box shown in the diagram below.

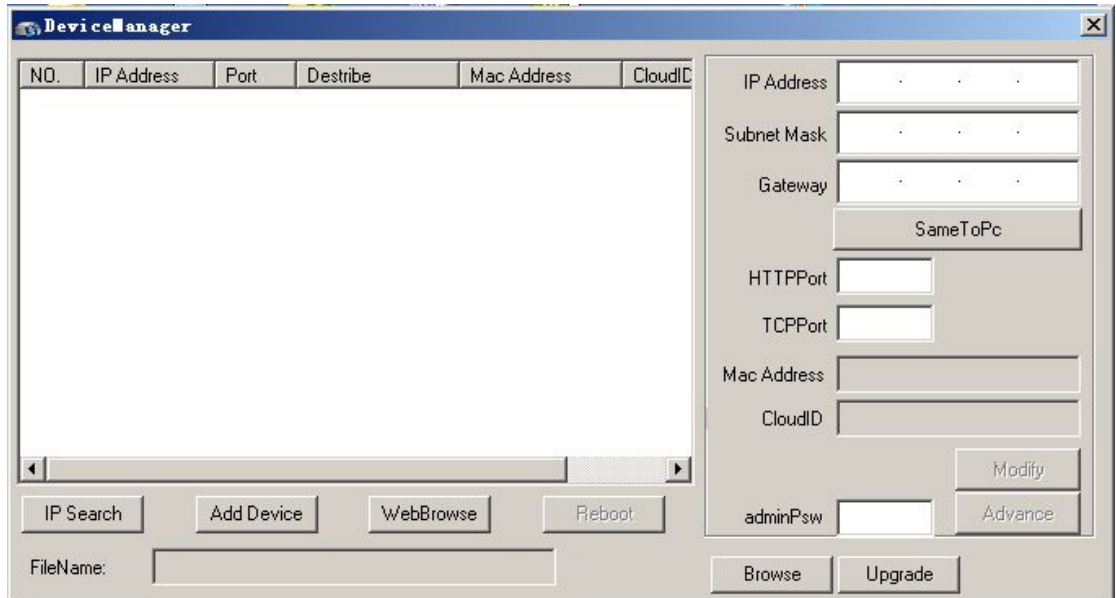


- 7) Click “finish” button to complete the installation. At this moment, the desktop will appear the

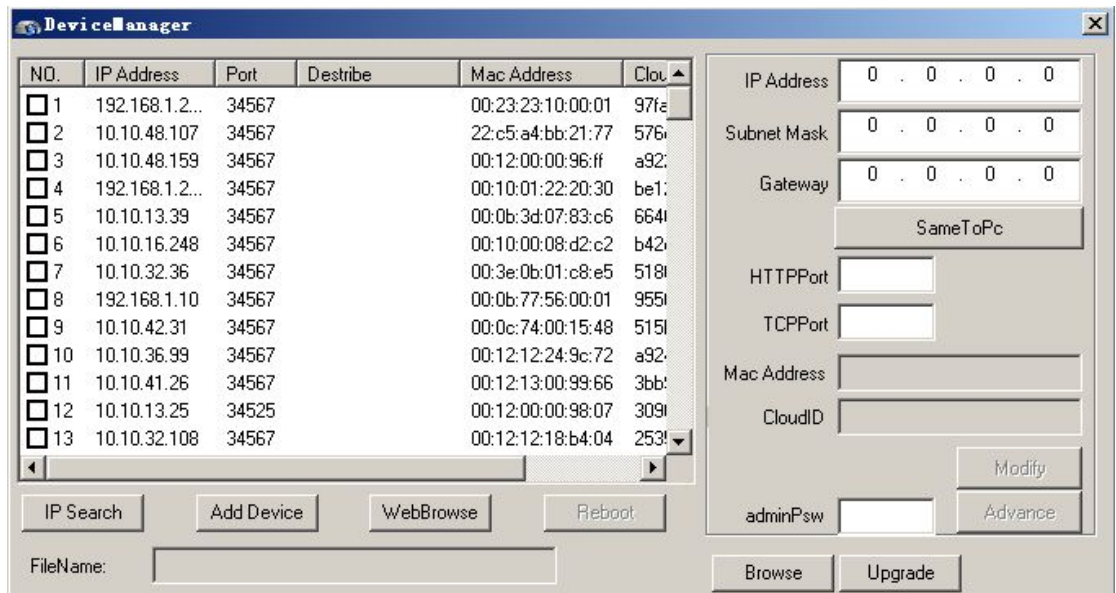
following icon



2. Device Manager interface is as follows:



1) Search device



2) Modify the network parameters: select a device, in the action bar on the right can modify the network parameters of the IP address, subnet mask, default gateway, HTTP port, TCP port, then the network parameters of the device modified successfully; click

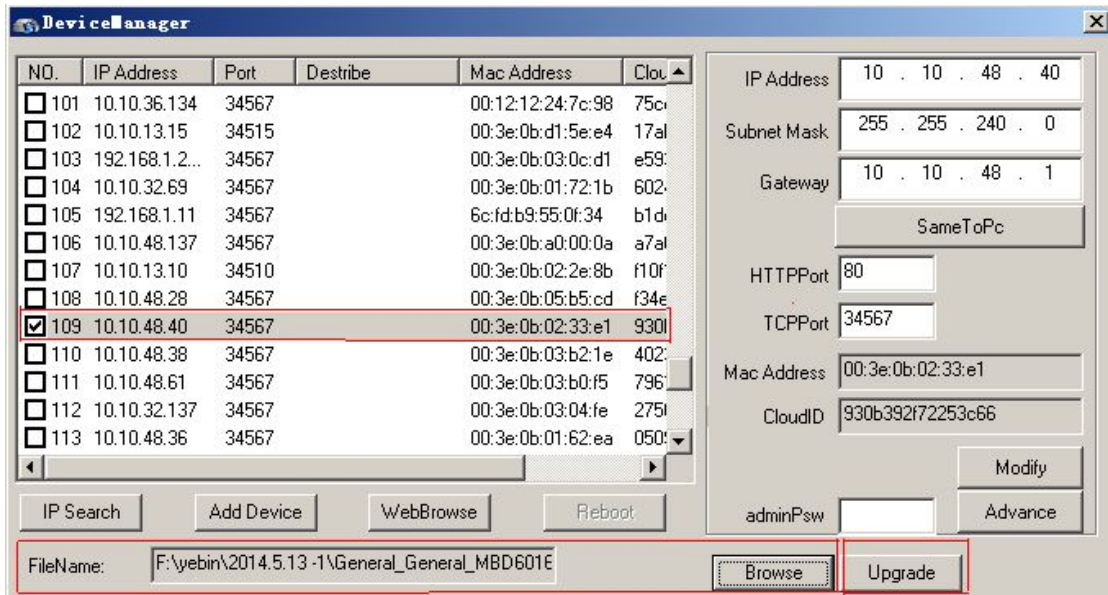
on the “consistent with the local PC” can make the subnet mask and default gateway fit to the PC.

IP Address: 10 . 10 . 47 . 45  
Subnet Mask: 255 . 255 . 240 . 0  
Gateway: 10 . 10 . 32 . 1  
SameToPc  
HTTPPort: 80  
TCPport: 34567  
Mac Address: 00:0b:3d:87:ab:01  
CloudID: 8bb76c2d0c4b9394  
adminPsw:   
Buttons: Modify, Advance

3) Advanced; configure the DNS, mobile phone monitoring enabled, DDNS, WIFI, etc.

Advance  
DNS1: 202 . 101 . 172 . 37  
DNS2: 202 . 101 . 173 . 157 SameToPc  
PhoneInfo  
Enable:   
Port: 34599  
DDNS  
DDNSType: CN99 Regsiter  
Enable:   
DomainName: your.3322.org  
DDNSName:   
Passwd:   
Wifi: Setting  
Buttons: Save, Cancel

4) Device upgrade firmware: select the device needs to upgrade, click the “browse” button (generally the suffix for upgrade firmware is ) select the firmware needs to upgrade, click the “upgrade” button.



5) Other interface button

Add device: input the IP address, port, user name and password of the device can add device manually.

Web access: select the corresponding device, click on the web access, can access to the device directly through IE.

Restart device: select the device needs to restart, click on the restart device button, the corresponding device is started.

: